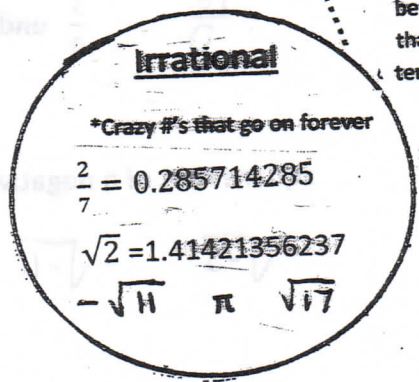
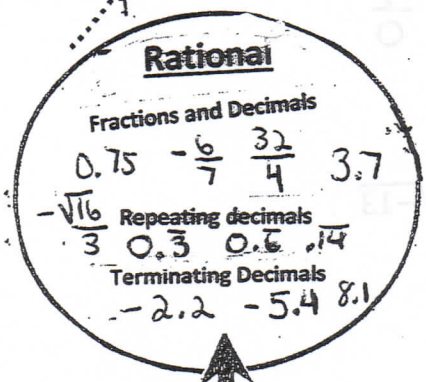
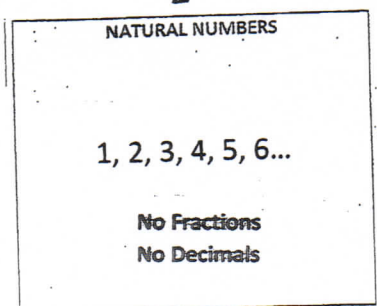
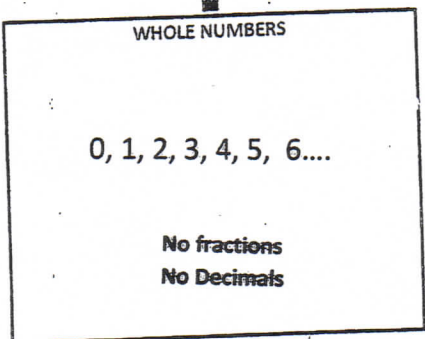
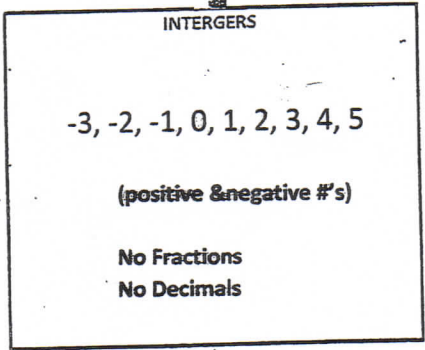


REAL NUMBERS

Consists of the set of Rational Numbers and the Set of Irrational Numbers



#'s that can only be written as decimal that do not terminate or repeat



$\sqrt{35}$

$\sqrt{.15}$

$\sqrt{45}$

$\sqrt{\frac{7}{9}}$

NOT REAL NUMBERS

$$\frac{18}{0}$$

$$\frac{3}{0}$$

undefined

$$\frac{7}{0}$$

square root of a negative #

$$\sqrt{-13}$$

$$\sqrt{-5}$$

$$\sqrt{-11}$$